

Made by:
Jsm Micro inc. Montreal Canada

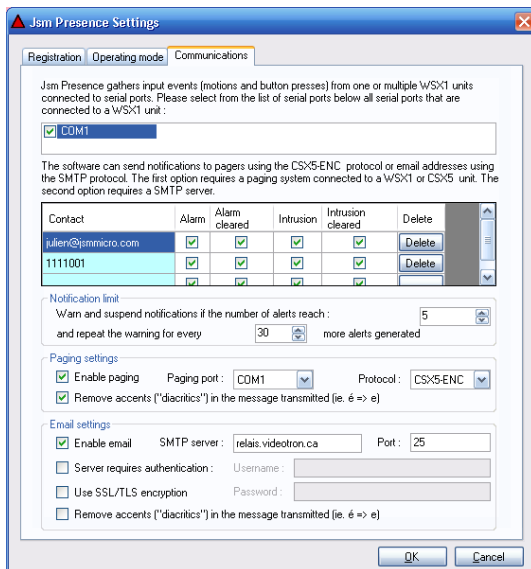
ID	Name	Telephone	Last presence	Time elapsed	Medical information	Remarks	Contacts in case of emergency
101	Lien/Carole/Carole	(514) 948-8888	2010-02-16 13:30:03 (blain reset automatic)	7h27			
102	Jean-François Savon		2010-02-16 20:57:53 (blain canceled by operator)	0h00			
103	Paul/Benoit		2010-02-16 13:30:03 (blain reset automatic)	7h27			
104	Prise0104		2010-02-16 20:57:56 (blain canceled by operator)	0h00			
105	Prise0105		2010-02-16 13:30:03 (blain reset automatic)	7h27			
107	Prise0107		2010-02-16 13:30:03 (blain reset automatic)	7h27			
108	Prise0108		2010-02-16 13:30:03 (blain reset automatic)	7h27			
109	Prise0109		2010-02-16 20:57:59 (blain canceled by operator)	0h00			
110	Prise0110		2010-02-16 13:30:03 (blain reset automatic)	7h27			
111	Prise0111		2010-02-16 13:30:03 (blain reset automatic)	7h27			
112	Prise0112		2010-02-16 13:30:03 (blain reset automatic)	7h27			
113	Prise0113		2010-02-16 13:30:03 (blain reset automatic)	7h27			
114	Prise0114		2010-02-16 13:30:03 (blain reset automatic)	7h27			
115	Prise0115		2010-02-16 13:30:03 (blain reset automatic)	7h27			
116	Prise0116		2010-02-16 13:30:03 (blain reset automatic)	7h27			
117	Prise0117		2010-02-16 13:30:03 (blain reset automatic)	7h27			
118	Prise0118		2010-02-16 13:30:03 (blain reset automatic)	7h27			
119	Prise0119		2010-02-16 13:30:03 (blain reset automatic)	7h27			
120	Prise0120		2010-02-16 13:30:03 (blain reset automatic)	7h27			
121	Prise0121		2010-02-16 13:30:03 (blain reset automatic)	7h27			
122	Prise0122		2010-02-16 13:30:03 (blain reset automatic)	7h27			
123	Prise0123		2010-02-16 13:30:03 (blain reset automatic)	7h27			
124	Prise0124		2010-02-16 13:30:03 (blain reset automatic)	7h27			
125	Prise0125		2010-02-16 13:30:03 (blain reset automatic)	7h27			
126	Prise0126		2010-02-16 13:30:03 (blain reset automatic)	7h27			
127	Prise0127		2010-02-16 13:30:03 (blain reset automatic)	7h27			
128	Prise0128		2010-02-16 13:30:03 (blain reset automatic)	7h27			
129	Prise0129		2010-02-16 13:30:03 (blain reset automatic)	7h27			
130	Prise0130		2010-02-16 13:30:03 (blain reset automatic)	7h27			

Overview

Jsm Presence is a software designed to monitor resident's presence in retirement homes and make sure everyone is safe. It can work using two modes; infrared motion sensors : when a given time lapse expires and no motion is detected, an alarm is raised; or push buttons : residents must push their buttons during a specific time period, an alarm is reported for residents who have not pressed their buttons at the end of the period. Alerts are displayed using a flashy blinking window, to catch attention. The software also supports defining absence periods and optionally notifying staff by email (Blackberry, iPhone, ...).

Features

- Designed to monitor resident's presence : make sure every resident is safe
- Works with push buttons : if residents do not press within a certain time frame, an alarm is reported
- Works using infrared motion sensors : if a certain time period elapses, an alarm is reported
- Gather presence data from multiple COM ports
- Define absence periods to disable alarm reporting for a given time lapse if the resident plans to go away
- Intrusions can be reported if motion is detected during an absence period
- Transmit notifications to pagers and email addresses if alarms and intrusions are reported
- Quickly get an overview of residents' personal information and current status
- Add custom details to residents' profiles such as phone number and remarks
- View an history of the events that occurred for each resident
- Receive graphical alerts on-screen for alarms and intrusions



Use with the following products

- WSX1 : CPU
- CTD3/other : call management software
- CSX5-ENC : Encoder module (optional)

Technical specifications

- Systems : Windows 2000, XP, Vista, 7
- Platform : Microsoft .NET Framework 2.0
- Security : Registration using a product key
- Connection : serial connexion(s) to WSX1
- Paging : CSX5-ENC protocol (optional)
- Email : SMTP protocol (optional)