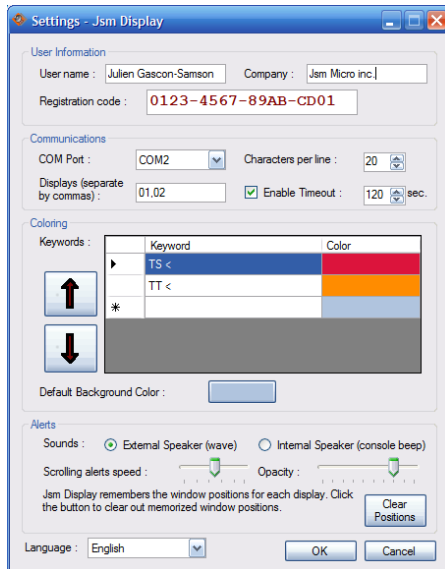


Made by:
Jsm Micro inc. Montreal Canada

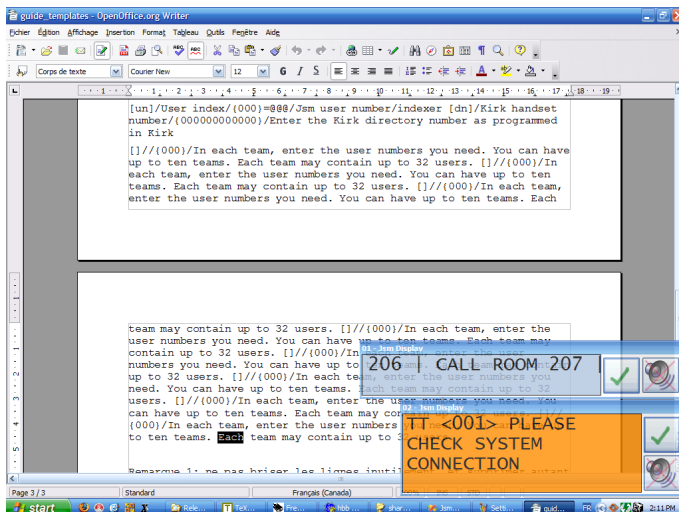


Overview

Jsm Display is a software simulating one or more virtual call display panels on a computer screen. It receives messages from the serial port using a proprietary protocol and pops up message windows on-screen. Different kind of bells will be played depending on the type of messages. Jsm Display can playback sound through external speakers or emit tones through the PC internal speaker.

Features

- display calls from multiple source addresses (multiple panels on the same physical screen)
- display calls in a rotating manner (for very long or multiple consecutive messages)
- select the size (width) of the panel
- select scrolling speed for scrolling messages
- select message windows transparency (opacity)
- messages will not take control of keyboard and mouse and won't interrupt workflow
- change the background color of alert boxes if certain important sequences of characters appear
- **for example, change the background color to red if the keyword TROUBLE appears**
- play wave sounds or emit PC speaker beeps when some messages appear
- specific sounds will be played depending on the severity of the alerts
- memorize message window positions
- supervise if the communication seems to be dead



Use with the following products

- WSX1 : CPU
- CTD3/other : call management software

Technical specifications

- Systems : All Windows versions
- Platform : Microsoft .NET Framework 2.0
- Security : Registration code
- Connection : serial (RS232) connexion to WSX1